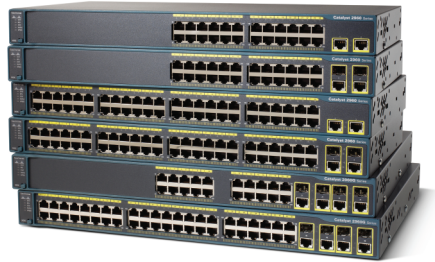


Cisco Catalyst 2960 Series Switching Solutions

At-A-Glance

The Cisco® Catalyst® 2960 Series Switches are fixed-configuration switches offering Fast Ethernet and Gigabit Ethernet connectivity with enhanced LAN services for midmarket and branch office networks.

Figure 1. Cisco Catalyst 2960 Series



Primary Features

- Standalone fixed-configuration switches
- Layer 2 switching with intelligent Layer 2 through 4 services for the network edge
- Fast Ethernet and Gigabit Ethernet connectivity
- Up to 48 10/100 ports or 10/100/1000 ports
- Integrated security, including Network Admission Control (NAC)
- Advanced quality of service (QoS) and resiliency
- AC power supply failure protection with external power supply

Primary Benefits

- **Security:** Network security is enabled through a wide range of authentication methods, data encryption technologies, and NAC based on users, ports, and MAC addresses.
- **Availability:** 802.1S/W enables standards-based fault tolerance, load balancing, and rapid recovery; Flexlink provides sub 100msec convergence; Per VLAN Spanning Tree Plus (PVST+) increases available bandwidth by allowing traffic on redundant links.
- **QoS:** Network control and bandwidth optimization through advanced QoS, granular rate limiting, access control lists (ACLs), and multicast services
- **Management:** Cisco Network Assistant simplifies configuration, upgrades, and troubleshooting. Smartports enable fast and easy configuration of Cisco Catalyst intelligent capabilities; express setup enables quick and easy out-of-box setup using a Webpage interface; resource templates help customize switch resources for the application.

Customers

The Cisco Catalyst 2960 Series solutions are ideal for:

- Customers with 250 or more employees who expect intelligent services at entry-level functionality
- Customers interested in intelligent features and capabilities such as QoS, enhanced security, and availability
- Customers who want to quickly deploy and easily manage their networks

Ordering Information

Part Number	Description
WS-C2960-24TT-L	24 10/100 + 2 10/100/1000, LAN Base image
WS-C2960-24TC-L	24 10/100 + 2 dual-purpose uplinks, LAN Base image
WS-C2960-48TT-L	48 10/100 + 2 10/100/100, LAN Base image
WS-C2960-48TC-L	48 10/100 + 2 dual-purpose uplinks, LAN Base image
WS-C2960G-24TC-L	20 10/100/1000 + 4 dual-purpose uplinks, LAN Base image
WS-C2960G-48TC-L	44 10/100/1000 + 4 dual-purpose uplinks, LAN Base image

Product Availability

Shipping worldwide, no restrictions.

Pricing Information

For pricing information, visit www.cisco.com/cgi-bin/front.x/pricing?Request=Home/

Learn More About Cisco Catalyst 2960 Series Switches

For more information, go to www.cisco.com/go/catalyst2960.